

**WILSON TOWNSHIP
CHARLEVOIX COUNTY, MICHIGAN**

**Planning Department
319 N. Lake St.
Boyne City MI 49712**



**WILSON TOWNSHIP PLANNING COMMISSION
CHARLEVOIX COUNTY
NOTICE OF PUBLIC HEARING**

As required by the Wilson Township Zoning Ordinance Public Notice is hereby given that the Wilson Township Planning Commission will conduct a public hearing at 6:00 P.M. Wednesday, February 1, 2017 in the Wilson Town Hall located at 02530 Fall Park Road, Boyne City to hear the following:

A Public Hearing to consider a request from Alpena Oil for a special use permit to construct an grocery store with a gas station. The property is located at 01231 M-75 Parcel # 15-015-001-001-15.

Further information on this request is available through the Township Planner by calling (231) 582-0343. Written comments may be submitted until noon the day of the meeting to the Wilson Township Planner, 319 N. Lake St., Boyne City, MI 49712, or e-mail comments to smcpherson@boynecity.com.

SITE NOTES

CURRENT ZONING COMMUNITY SERVICE COMMERCIAL
 PROPOSED ZONING COMMUNITY SERVICE COMMERCIAL
 EXISTING USE RECREATIONAL (PUTT PUTT GOLF)
 PROPOSED USE RETAIL/GAS
 LOT AREA (LOTS 1&9) 215,533 SQ.FT.
 PROPOSED BUILDINGS 8,800 SQ.FT.
 % LOT COVERAGE BY BUILDING 4.1%
 % LOT COVERAGE BY HARD SURFACE 35.1%

SETBACK REQUIREMENTS:
 FRONT YARD 25 FEET
 REAR YARD 50 FEET
 SIDE YARD 50 FEET

PARKING REQUIREMENTS:

RETAIL STORES
 ONE (1) PARKING SPACE FOR EACH 150 SQ.F.T OF FLOOR AREA, PLUS ONE (1) PARKING SPACE FOR EACH EMPLOYEE WORKING DURING MAX. EMPLOYMENT HOURS.

4705 SQ.FT.
 + 150 SQ.FT.
 31 SPACES
 + 5 SPACES
 36 SPACES

EMPLOYEES 5
 TOTAL RETAIL PARKING

TOTAL REQUIRED PARKING 36 SPACES
 PROVIDED PARKING
 BARRIER FREE PARKING 2 SPACES
 PARKING SPACES 42 SPACES
 TOTAL PROVIDED PARKING 44 SPACES

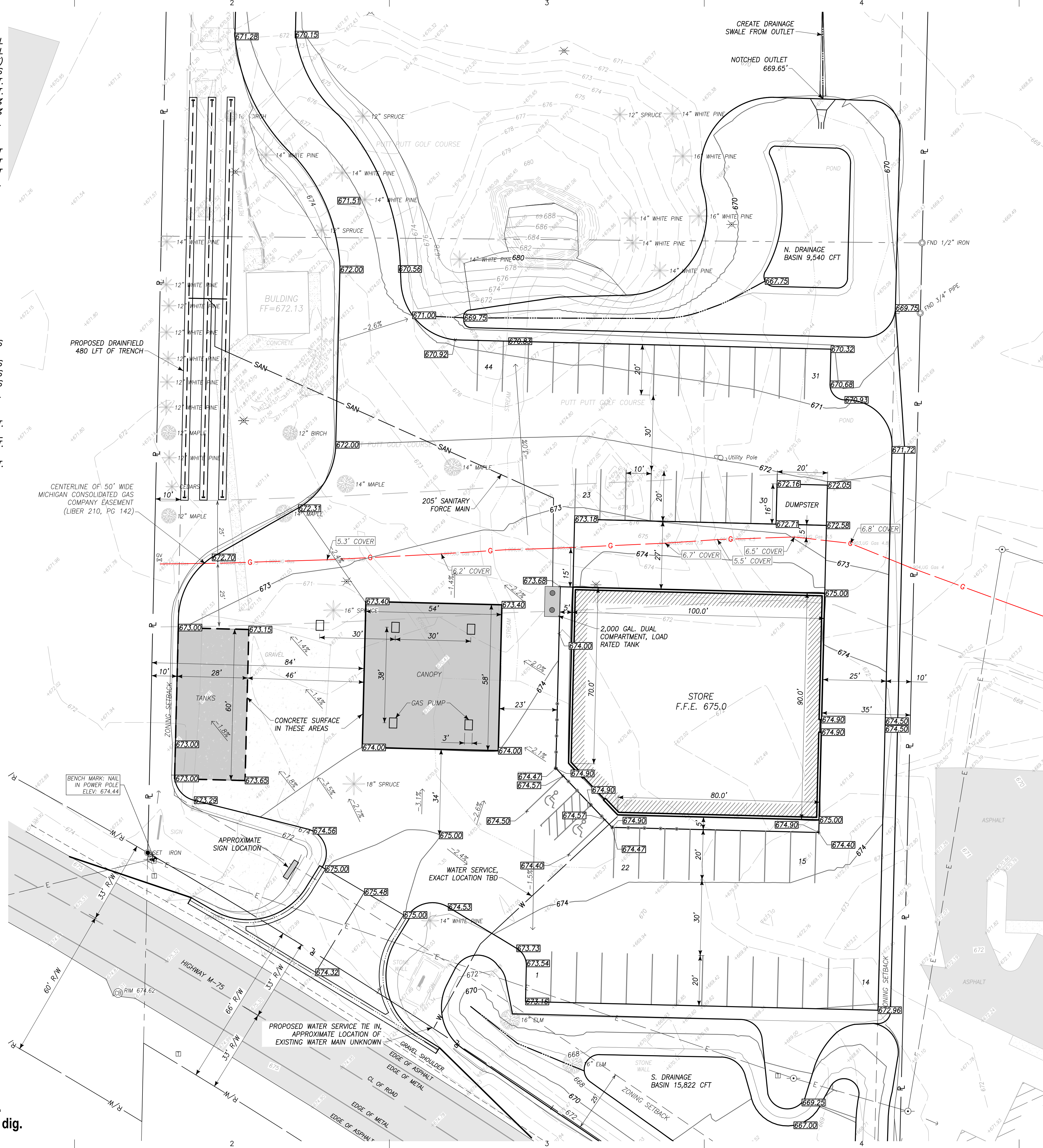
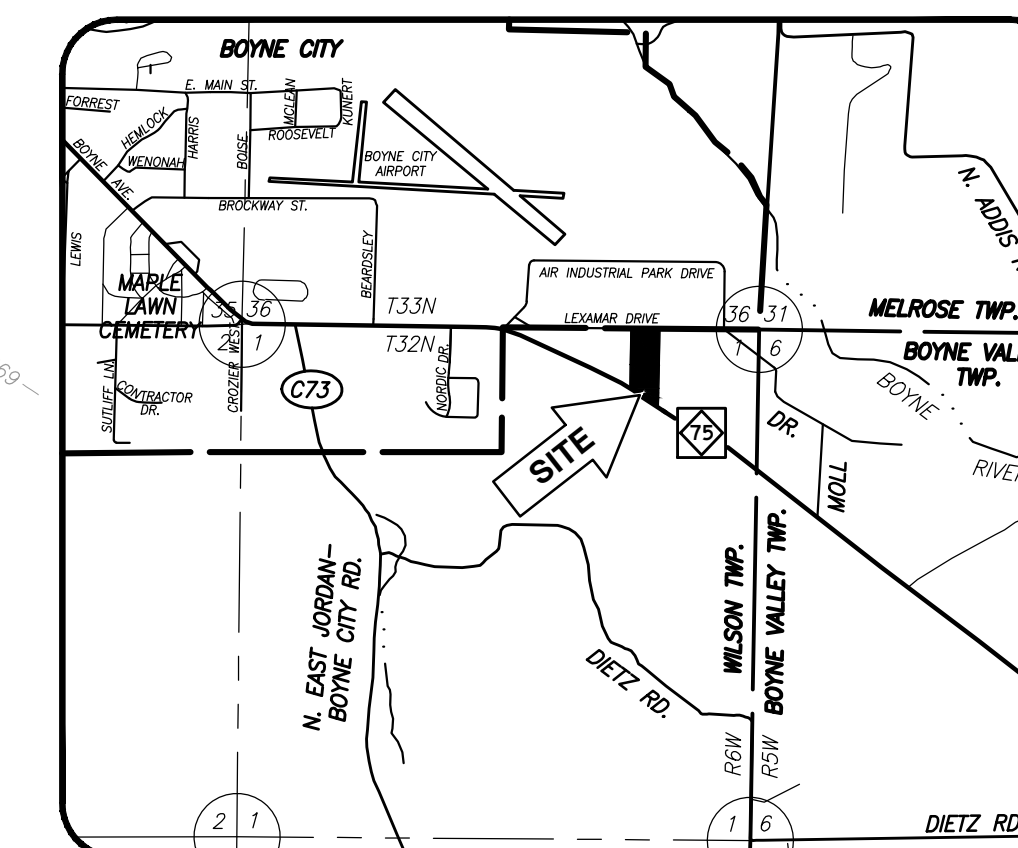
RETENTION CALCULATIONS:

TOTAL IMPERVIOUS SURFACE 75,730 SQ.FT.
 BASIS: 3" OF RAINFALL x 0.25 FT
 RETENTION REQUIRED 18,933 CU.FT.

RETENTION PROVIDED 25,362 CU.FT.

VICINITY MAP

SCALE: 1"=2000'



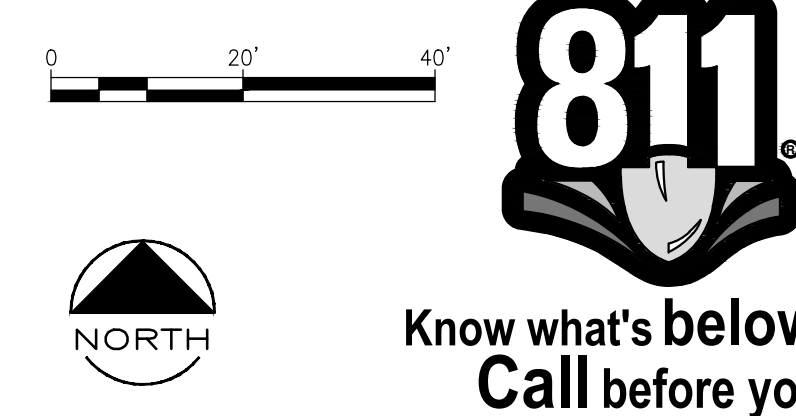
LEGEND

DESCRIPTION	PROPOSED	EXISTING
BUILDING	[Symbol]	[Symbol]
STORM SEWER	[Symbol]	[Symbol]
SANITARY SEWER	[Symbol]	[Symbol]
WATER	[Symbol]	[Symbol]
NATURAL GAS	[Symbol]	[Symbol]
UNDRGRD ELEC.	[Symbol]	[Symbol]
OVERHEAD ELEC.	[Symbol]	[Symbol]
UNDRGRD TEL.	[Symbol]	[Symbol]
WELL	[Symbol]	[Symbol]
MANHOLE	[Symbol]	[Symbol]
CATCH BASIN	[Symbol]	[Symbol]
FIRE HYDRANT	[Symbol]	[Symbol]
UTILITY POLE	[Symbol]	[Symbol]
LIGHT POLE	[Symbol]	[Symbol]
CLEANOUT	[Symbol]	[Symbol]
WATER VALVE	[Symbol]	[Symbol]
DECIDUOUS TREE	[Symbol]	[Symbol]
CONIFEROUS TREE	[Symbol]	[Symbol]
BUSH	[Symbol]	[Symbol]
TREELINE	[Symbol]	[Symbol]
DITCH OR SWALE	[Symbol]	[Symbol]
ELEVATION	[Symbol]	[Symbol]
CONTOUR	[Symbol]	[Symbol]
PROPERTY LINE	[Symbol]	[Symbol]
UNIT LINE	[Symbol]	[Symbol]
FENCE	[Symbol]	[Symbol]

ABBREVIATIONS

ASPH - ASPHALT	LF - LINEAL FEET
BF - BARRIER FREE	PVC - POLYVINYLCHLORIDE PIPE
BLDG - BUILDING	RCP - REINFORCED CONC. PIPE
C.L. - CHAIN LINK	RR - RAILROAD
C/C - CENTER TO CENTER	STL - STEEL
CMP - CORRUGATED METAL PIPE	STM - STORM
CONC - CONCRETE	T/W - TOP OF CURB
DIP - DUCTILE IRON PIPE	T/W - TOP OF WALK
F.G. - FINISH GRADE	T/W - TOP OF WALL
FDN - FOUNDATION	TE - TOP ELEVATION
FFE - FINISH FLOOR ELEVATION	TYP - TYPICAL
IE - INVERT ELEVATION	

B2 SITE PLAN
 1"=20'



Performance Engineers, Inc.
 Civil / Structural Engineering
 406 Pecoskey Avenue
 Charlevoix, Michigan 49720
 Phone: (231) 547-2121
 Fax: (231) 547-0084
 www.performanceeng.com

CONSULTANTS:
 BOUNDARY SURVEY & TOPOGRAPHIC MAPPING
FERGUSON & CHAMBERLAIN ASSOCIATES, INC.
 PROFESSIONAL SURVEYORS
 103 W. UPRIGHT STREET
 CHARLEVOIX, MICHIGAN 49720
 Phone: (231) 547-6882
 Fax: (231) 547-6021

ALPENA OIL COMPANY
 PROPOSED CONVENIENCE STORE
 01231 M-75 S., BOYNE CITY, MICHIGAN
 OWNER
 ALPENA OIL COMPANY
 235 WATER STREET, ALPENA, MICHIGAN 49707

MARK	DATE	DESCRIPTION
0	12/6/16	OWNER REVIEW
1	1/2/16	TOWNSHIP SUBMITTAL

PROJECT NO: 16-4834
 CAD DWG FILE: 4834_Site.DWG
 DRAWN BY: J.LINDFORS
 DESIGNED BY: J.MALEWITZ
 CHECKED BY:

SEAL

SHEET TITLE
CONCEPTUAL SITE PLAN
 S1
 SHEET 1 OF 1

K:\PROJECTS\4834\DRAWINGS\4834_SITE.DWG - S1 - PLOTTED 1/2/2017 2:49 PM BY JIM MALEWITZ

COPYRIGHT: PERFORMANCE ENGINEERS, INC 2015